


Trust Kuhmo  
for quality timber

# Contents

2-3	.....	Commitment and reliability since 1955
4-5	.....	We deliver
6-7	.....	We put our customers first
8-9	.....	We care
10-11	.....	From the forest to our customers
12-13	.....	Our strength is diversity
14-15	.....	Call on our experience





## Commitment and reliability since 1955

Kuhmo Oy is a dynamic and international independent sawmilling company from northern Finland. It is well known for a heartfelt commitment to quality, customer focus and the environment.

The northern climate creates the best pine and spruce – wood is dense, strong and straight. Kuhmo Oy timber comes from the sustainably managed forests of Kainuu. Wood as a raw material is renewable and natural. At the end of its life cycle it can be utilised as a source of bioenergy simply by burning.

Our sawn timber is distributed under the shipping mark URSUS (Latin for a bear). Based on its beautiful texture and visual outlook sawn timber from Kuhmo is the most suitable for interior decoration, for example, in high calibre joinery and furniture. Its strength and stability make it ideal for building applications, such as load bearing constructions and building components (e.g. gluelam).



## We deliver

### **Quality and Reliability**

At Kuhmo Oy we pride ourselves on the consistent quality of our products and the reliability of our deliveries. We are always looking to develop our products and improve customer service. Continuing investment guarantees competitive products for demanding markets. State-of-the-art technology enables us to offer our customers excellent and more versatile products. Our goal is to deliver on budget and on time, every time.





At Kuhmo Oy the customer  
is very much at the heart  
of everything we do.



# We put our customers first

## **Service, not lip service**

By tailoring our products to customers' specific needs, we are able to exceed expectations. This is backed by high levels of technical experience and individual customer service, as well as flexible but accurate sawing and grading technology.

Our modern circular saw technology enables us to achieve excellent accuracy of measurement and surface. To the customer this means a better finish, easier handling and less waste.



# We care

## Total commitment

We are totally committed to ecologically, socially and economically viable forestry. The prosperity of Kuhmo and the region of Kainuu has always been strongly connected with the forest. Its well-being and sustainability are vital not only to Kuhmo Oy but also to the whole community.

We co-operate with various stakeholder groups and distribute information about our policies on environmental and social responsibility, our environmental principles on forestry and the importance of environmental impact of our operations.

Forestry and the use of forests are guided by ecological principles. A large proportion of Finland's preserved forests is in the area of Kuhmo and Kainuu.



Kuhmo Oy has integrated environmental aspects and conservation needs into its operations and principles.





# From the forest to our customers

## Production

Annual capacity is 350,000 m<sup>3</sup> of timber, 85% pine and 15% spruce.

Our production process consists of:

## Log sorting

Logs are sorted by size, volume and quality. This gives the basis for pricing the raw material in accordance with preferences mutually agreed with the suppliers. For production, the logs are sorted according to top diameter, quality and often length. The criteria are based on the requirements of the end products in the relevant log classes.

## Sawmill

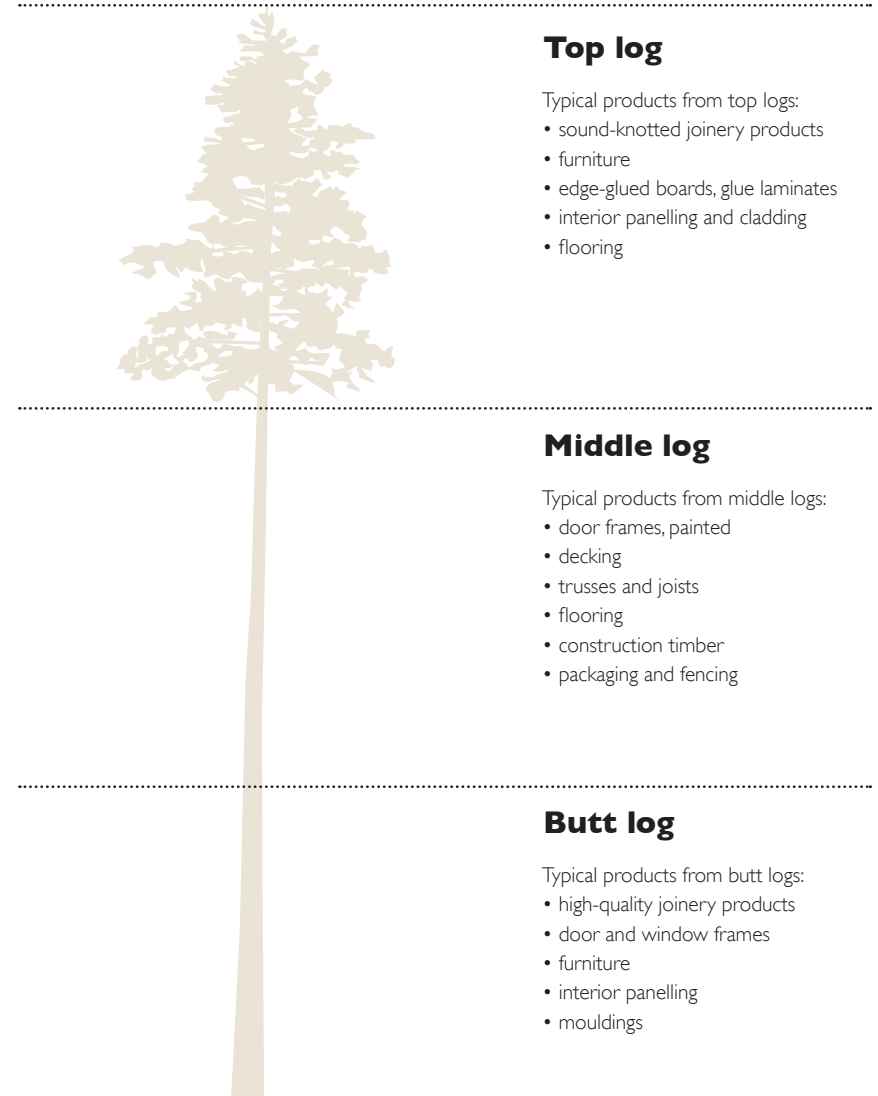
In the sawmill, logs are processed into sawn timber and when necessary can also be re-sawn to make products like heart-free material. After the cutting, dimensions and qualities are separated to give each product the best kilning process. The preliminary grading is done by state-of-the-art digital camera technology. This makes the final grading easier and more accurate.

## Kiln drying

Each dimension and quality is allocated the most suitable kilning programme. We now have nine progressive and twenty chamber kilns which give enough flexibility to ensure each product the best kilning process depending on dimension, quality and required moisture content.

## Grading and packaging

The final grading is carried out after drying, and prior to packaging, to ensure the correct quality of the product when packaged and protected. Rigorous and regular quality control procedures are implemented at every stage.



# Our strength is diversity

## Sawn timber

Sawn softwood is our main product. The choice of dimensions is almost limitless. Our philosophy, based on customer requirements, has led to the manufacturing of numerous tailored products which complement the standard dimensions. Full-colour digital camera grading ensures complete consistency.

## Customised products

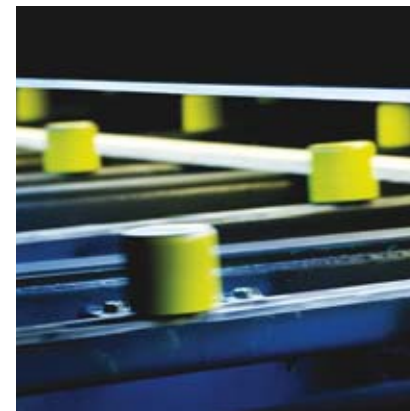
Standard dimensions may not always be the best solution. We try to work together with our customers to find products and dimensions that best suit the requirements set by the end products. This may lead to unusual thickness and width combinations, as well as specified qualities.

## Processed goods

The proportion of processed goods is steadily growing in our portfolio. To complement our own product range, we use the joinery and planing expertise of local subcontractors. This considerably widens the product mix on offer. It also guarantees that our raw material is used and that the products therefore have the same properties as our timber.

## By-products

All of the bark and sawdust produced by Kuhmo Oy is used to provide heat and electricity. Heat is used in our kilning process and heating the town of Kuhmo. All the wood chips find their way to Finnish pulp and paper mills. By utilising the incoming raw material fully, we minimise the effects on the environment.





# Call on our experience

**Facts and figures** Kuhmo Oy is a privately owned company, founded in 1955.  
Production started in 1959.

**Employees** 145

**Capacity** 350 000 m<sup>3</sup> of timber

**Species** 85% pine (redwood) and 15% spruce (whitewood)

**Kilning technology** 9 progressive, and 20 chamber kilns, joinery – and shipping dry

**Sawing technology** Chipper-canter, circular saw lines

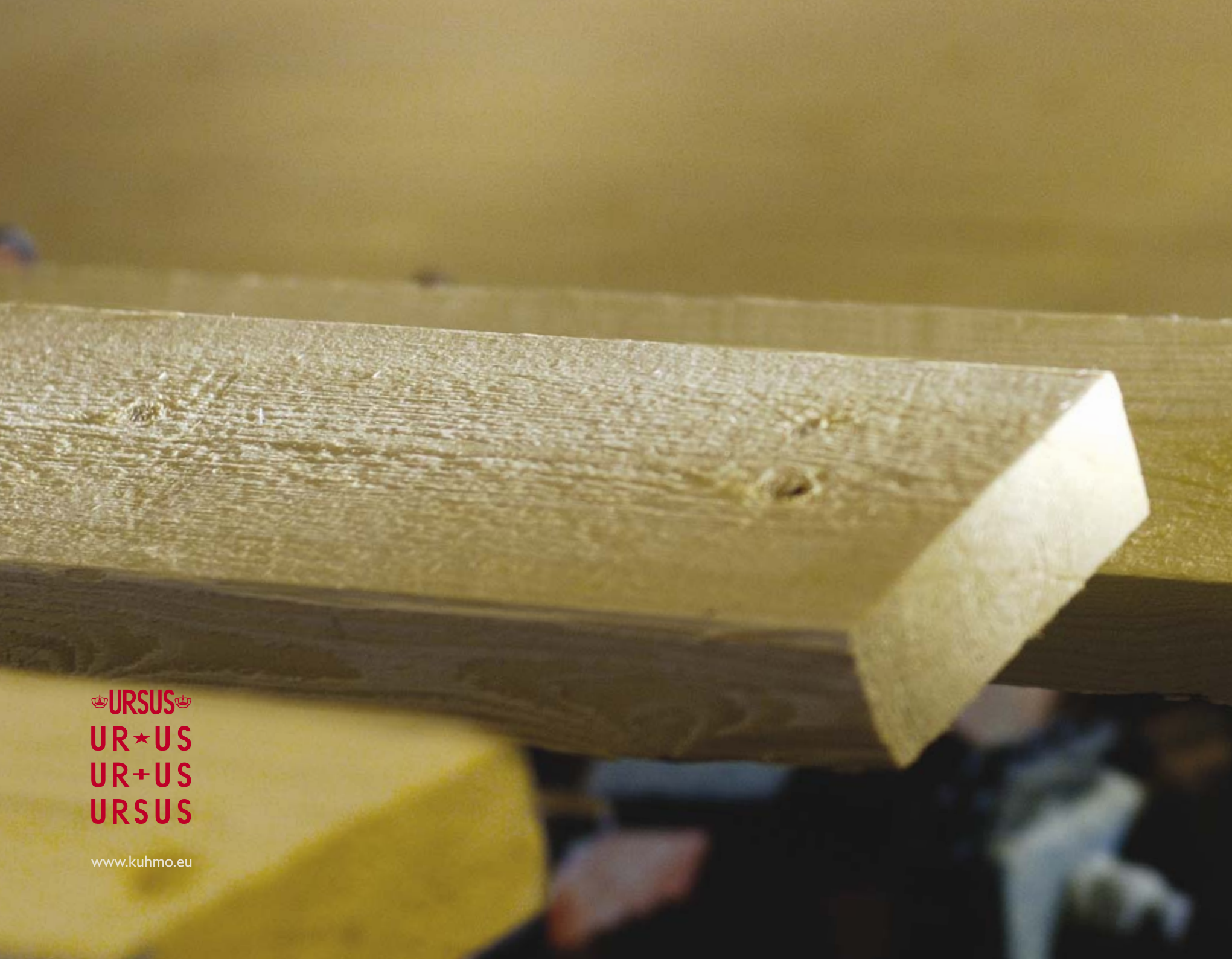
**Grading technology** Full colour camera grading for both unseasoned and dry

**Processing** Green split, re-sawing, planing and cross cutting

**Deliveries** By sea, rail and lorry. Direct deliveries to customers' yards by lorry

For the complete story about Kuhmo Oy and URSUS, please visit  
[www.kuhmo.eu](http://www.kuhmo.eu)





👑**URSUS**👑  
**UR★US**  
**UR+US**  
**URSUS**

[www.kuhmo.eu](http://www.kuhmo.eu)